

Tips for Prevention of Spread during Treatment

- Wash your hands often, especially before eating or preparing food, and after using the toilet.



- Keep fingernails short and well scrubbed. Keep fingers away from mouth and nose. Don't bite your fingernails!

- Do not scratch around the rectum.



- Daily morning bathing. (Shower or stand up bath preferred.)

- Wear snug fitting underpants day and night. Change them twice a day.

- Change bed sheets and night clothes daily. Avoid shaking clothes and bedding as it may disperse eggs into the air.

- Wash clothes, bed linen, and towels on a hot cycle every day during treatment.

- Scrub bathroom floors and toilet seats daily.

- Vacuum rugs daily.

- Sleep alone, if possible during treatment.

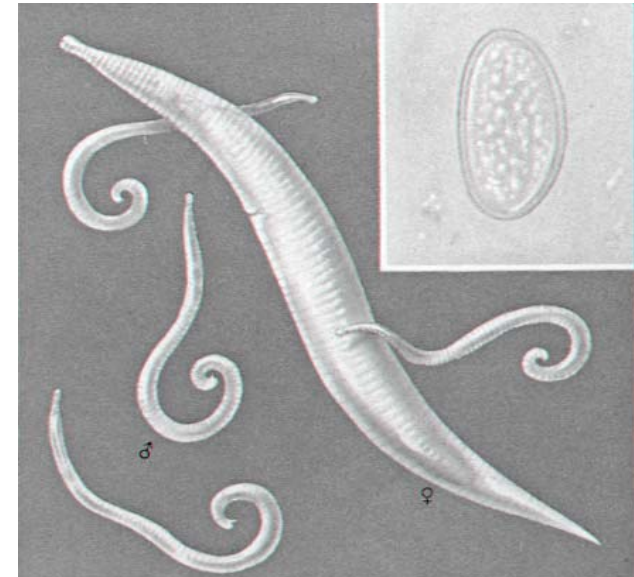


All client information is kept confidential.



Administration	758-3820
HIV Testing & Counseling	758-3880
Communicable Disease	758-3885
Community Resource Nurse	758-3675
Dental	758-3835
Environmental Health	758-3830
Family Planning	758-3870
Hearing Impaired Line	758-3725
Hearing & Vision	758-3890
Immunization	758-3840
Laboratory	758-3825
Lead Testing	758-3768
Nursing Services	758-3850
Saginaw Health Plan	758-3855
Sexually Transmitted Diseases	758-3880
Substance Abuse Assessment	758-3781
After Hours	888-466-3141
WIC	758-3733

PINWORMS



Saginaw County
Department of Public Health

1600 N. Michigan Ave.
Saginaw, MI 48602
(989) 758-3800

“Protecting and promoting the public’s health
and well-being”

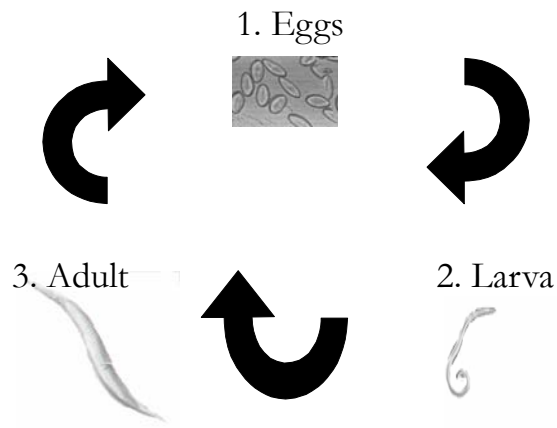
www.saginawpublichealth.org



Pinworms

A common intestinal infection caused by a roundworm called a nematode. The adult worms look like tiny pieces of white thread about 1/4 of an inch long. They get into the bowel of people who have swallowed the pinworm eggs. Five to fifteen percent of the population are infected.

Life Cycle - 1-2 months



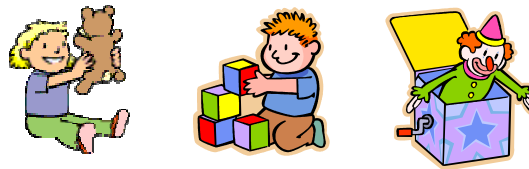
1. Eggs are ingested through the mouth of people who come in contact with them.
2. Eggs hatch in the person's small intestine. The newly hatch worm (larva) continues to grow as it travels down to the large intestine.
3. The mature pinworm travels through the large intestine until ready to lay it's eggs on the skin just outside the rectum.



Mode of Spread

You **ONLY** get pinworms by swallowing the eggs.

- ◆ Infected eggs are carried from the rectum to the mouth by the hands.
- ◆ When handling clothes, bedding, food, toys, and other items contaminated with eggs.



- ◆ Dust borne infection is possible in heavily contaminated areas.
- ◆ Eggs are infective for 2-3 weeks.



- Pinworms are **CONTAGIOUS** as long as worms are laying eggs on the skin around the rectum.
- Incubation period - from the time the egg is ingested until the adult worm crawls out of the rectum and lays her eggs. (About 1-2 months)

Symptoms

1. Itching - most people will have itching caused by worms crawling on the skin around the rectum.
2. Itching is usually worse at night when most of the worms come out.
3. Young children may be restless and irritable, eat and sleep poorly, and may scream during the night.
4. Sometimes worms can be seen around the rectum, on pajamas, or on the stool.



Treatment



Take prescribed medicine exactly as directed. Treatment may need to be repeated in 2-3 weeks. Families may need to be treated as a group. **Reinfection occurs easily.**

Exclusion from School

None

