

COVID-19 SCHOOL GUIDANCE

Saginaw County  HEALTH DEPARTMENT

Saginaw Schools Update

Christina Harrington, MPH

Delicia Pruitt, MD, FAACP

Carissa Hillman, REHS

COVID-19 SCHOOL GUIDANCE

Saginaw County  HEALTH DEPARTMENT

SCENARIOS TO CONSIDER

DR DELICIA PRUITT, MD, FAAFP

Disclaimer

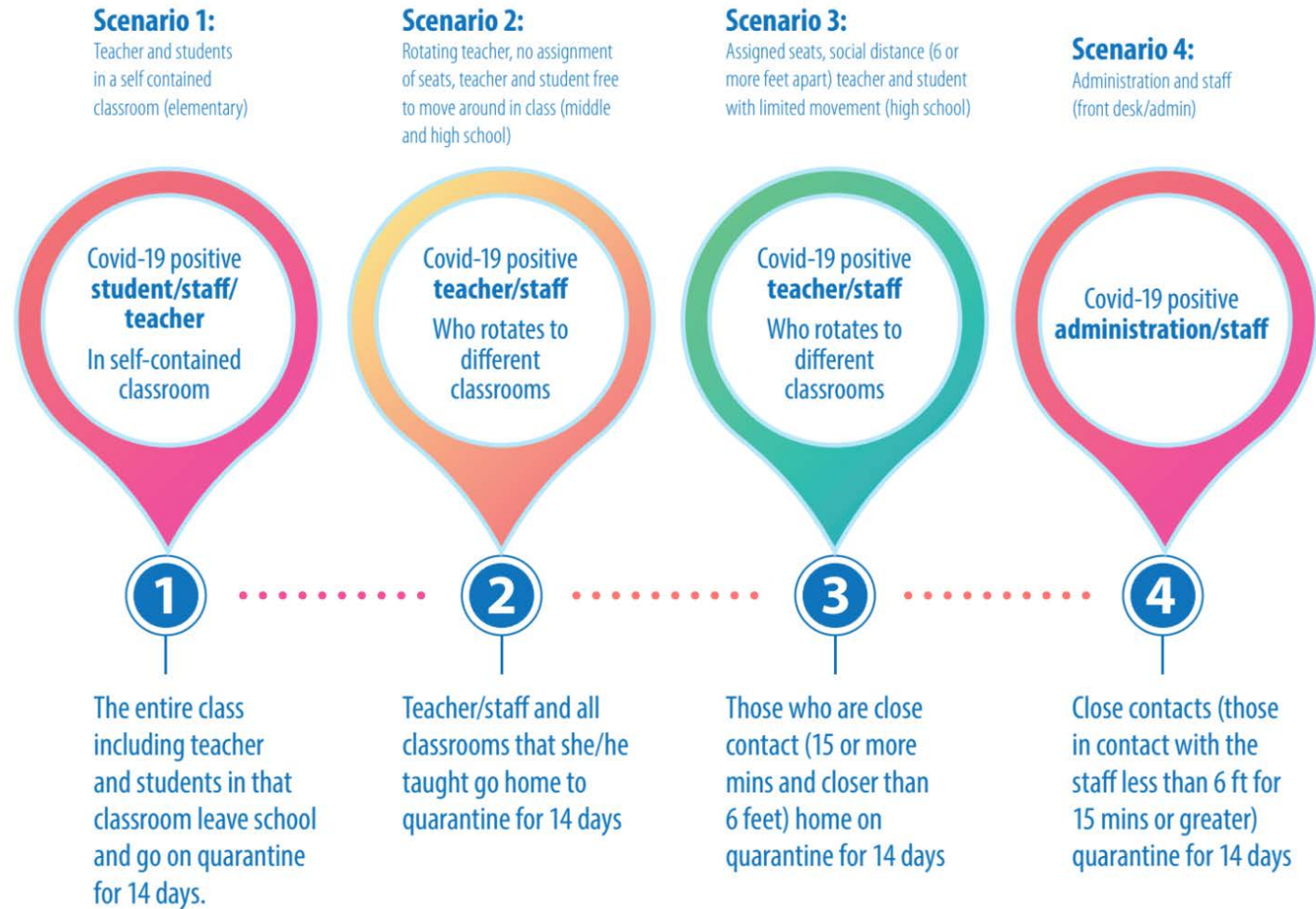
Please know that these scenarios have been developed to address common situations, we realize that not all scenarios can be covered.

Risk

- Someone will test positive
 - Not if, but when...
- Risk cannot be eliminated, but it can be reduced
- Our goal is help you reduce risk
- Assumptions for these scenarios is NOT the traditional method
 - Teachers stay, students move...This is worst case scenario

Scenarios

SCENARIOS to use when students, staff or teachers are positive for COVID-19



Scenario 1: Elementary School



1

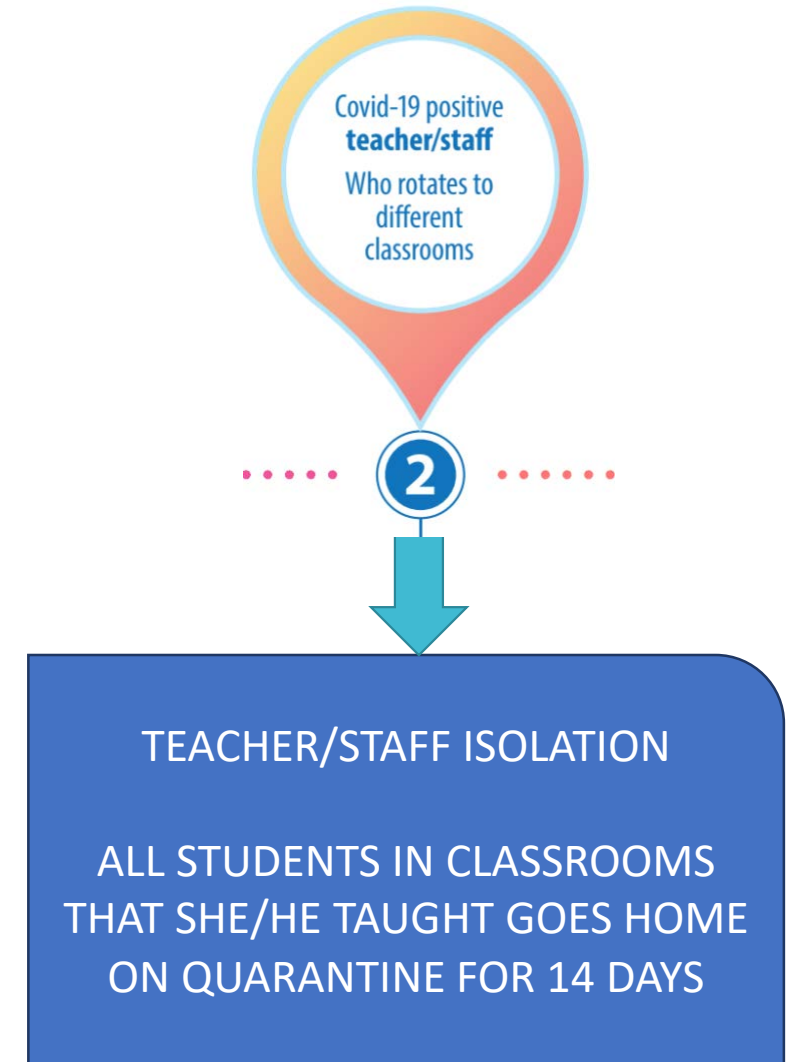
.....

THE ENTIRE CLASS INCLUDING TEACHER
AND STUDENTS IN THAT CLASSROOM
LEAVE SCHOOL AND GO ON
QUARANTINE FOR 14 DAYS

Scenario 2:

Middle & High School

- Rotating teacher moving classroom to classroom
- Kids staying in one classroom all day
- No assigned seating

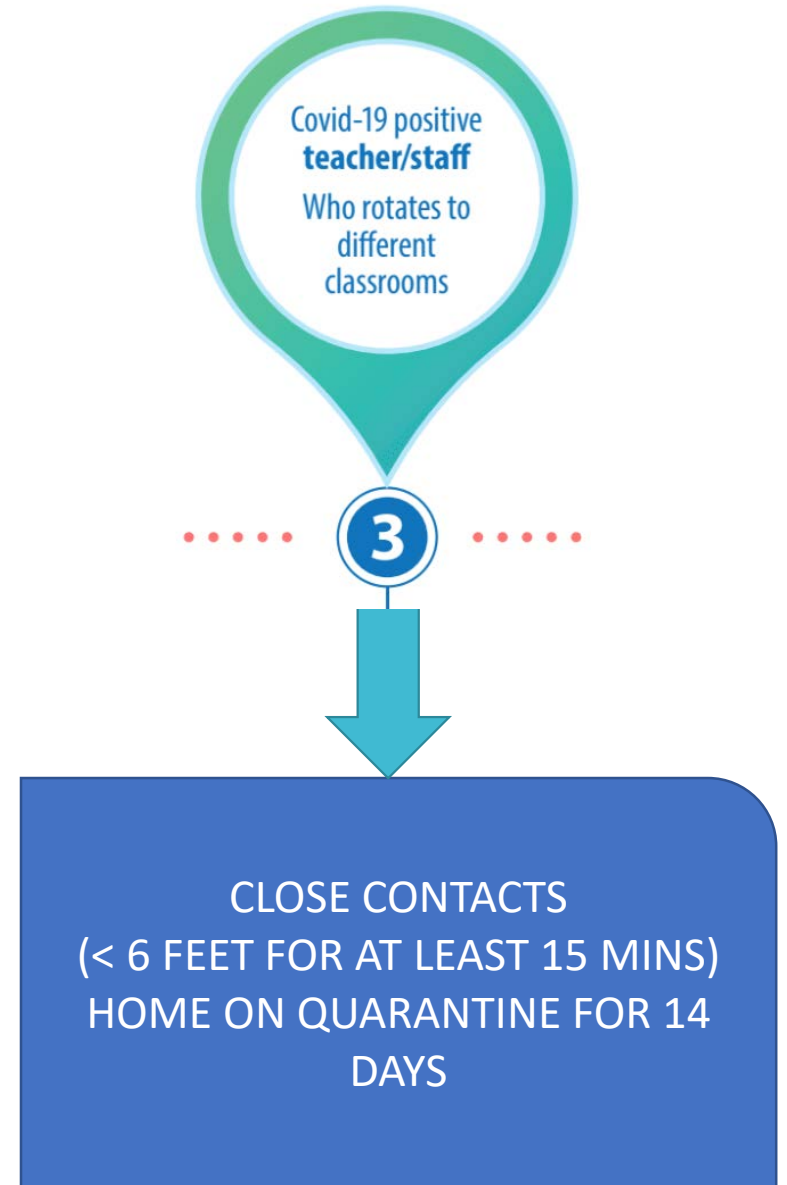


Scenario 3*:

Elementary, Middle & High School

***Ideal Scenario**

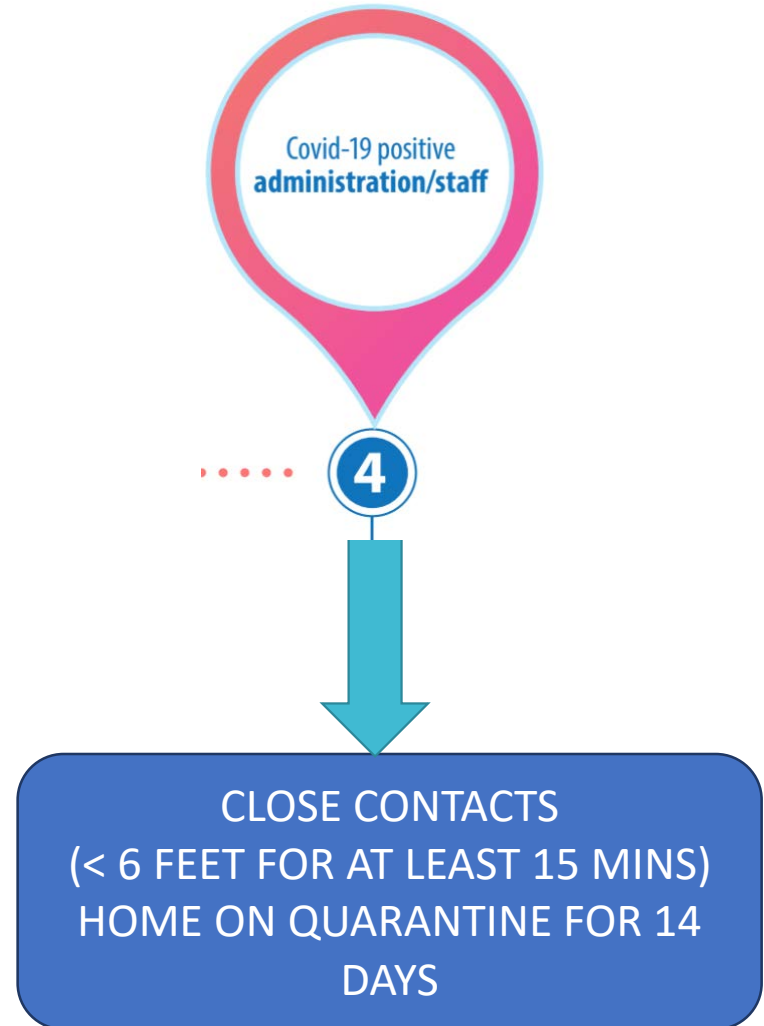
- Rotating Teacher
- Assigned seats
- Social distance
- Teacher and student with limited classroom movement



Scenario 4:
Administration
and Staff (Front
Desk/Admin)

Staff stay
within office
setting

Positive Staff
must isolate



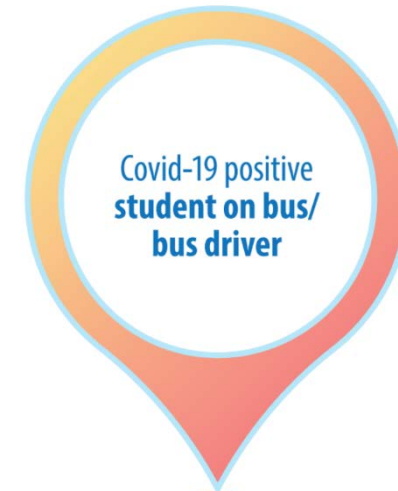
Bus Considerations

- Group family members together
- Windows slightly open to increase airflow
- Consider pre-screening at the bus stop
- Parents should be educated that they (Responsible Adults) should be present when the child gets on the bus
- Sick children should not be allowed on the bus!
 - Increases risk of disease spread
 - Not all seating on the bus allows for 6 feet of distance
- Everyone on bus wears mask

Scenario 5:

Bus

- No Assigned Seating
- No Clustering of Families



5

....



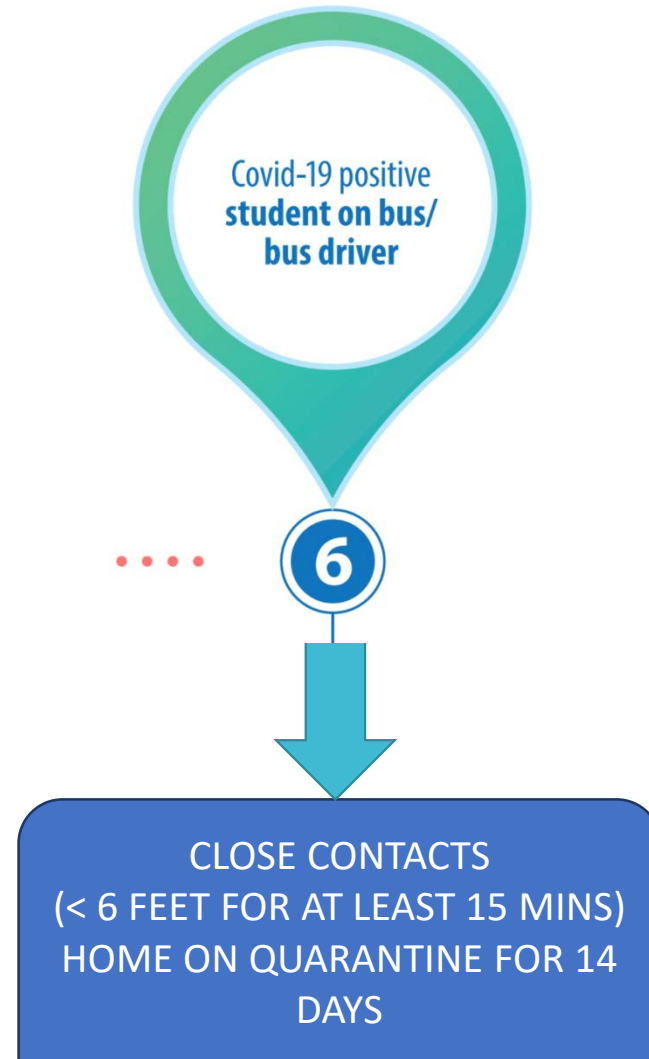
ALL CHILDREN AND BUS DRIVER GO ON
QUARANTINE FOR 14 DAYS

Scenario 6*:

Bus

*Ideal Scenario

- Assigned Seating
- Child Remains in Seat
- Windows Open
- Seat Logs Kept



Scenario: SYMPTOMATIC Staff or Child

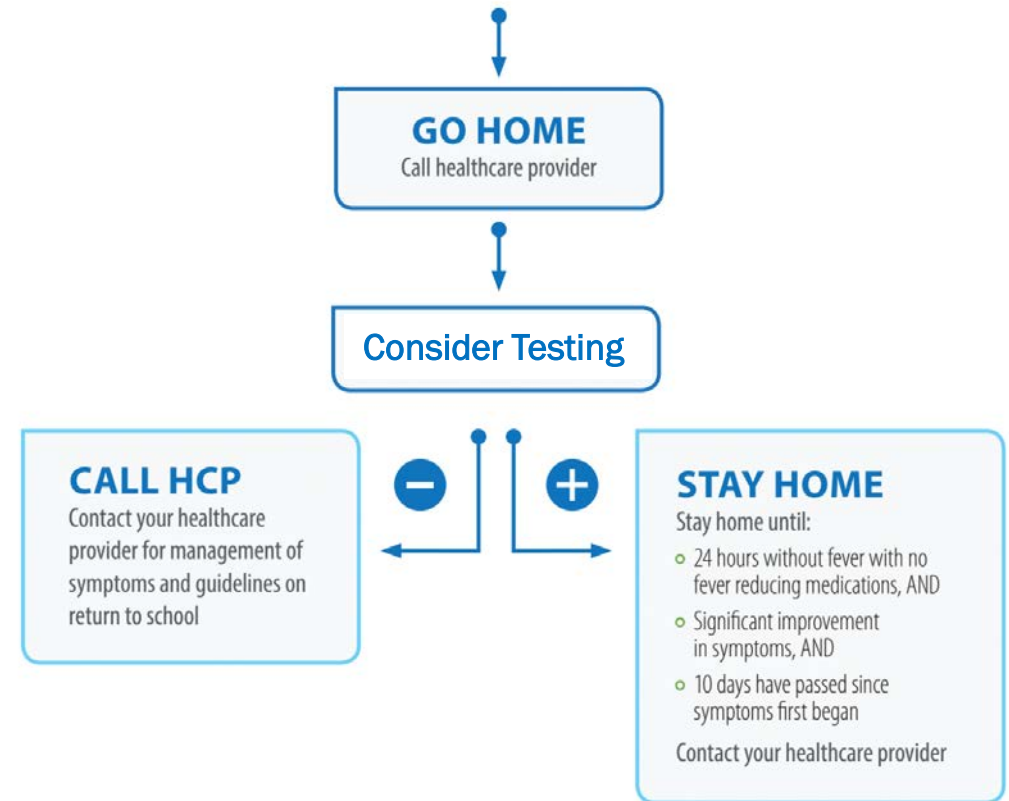
Symptoms to Send Home:

- At least 2 of the following fever (measure or subjective), chills, rigors (shivers), myalgia (muscle aches), headache, sore throat, nausea or vomiting, diarrhea, fatigue, congestion or runny nose;

OR

- At least 1 of the following: cough, shortness of breath, difficulty breathing, new olfactory disorder, new taste disorder.

Student or Staff Symptomatic?





Isolation Room Recommendations

- Each sick child should be isolated in a **SEPARATE** room
 - Reduces risk of disease spread
 - Children could have different diseases
 - Flu
 - COVID-19
 - Common cold
 - Staff and child must wear surgical mask
 - Escort child to parent vehicle, do not allow parent into school

COVID-19 SCHOOL GUIDANCE

Saginaw County  HEALTH DEPARTMENT

ENVIRONMENTAL CONSIDERATIONS

Cari Hillman, R.E.H.S.



Reducing Risk – Cleaning & Disinfection

Reducing the risk of exposure to COVID-19 by cleaning and disinfection is an integral part of reopening schools.

Cleaning & Disinfection

- Develop a schedule for increased, routine cleaning and disinfection.
- Clean surfaces and objects using soap and water prior to disinfection.
- Always wear gloves appropriate for the chemicals being used for routine cleaning and disinfecting.
- Follow the directions on the disinfectant label for additional PPE needs.
- When you finish cleaning, remember to wash hands thoroughly with soap and water.

Cleaning & Disinfection

- Disinfect frequently touched surfaces (e.g., door handles, sink handles, drinking fountains) within the school and on school buses at least daily or between use as much as possible.
- Use of shared objects (e.g., gym or physical education equipment, art supplies, toys, games) should be limited when possible, or cleaned between use.
- Ensure products being used meet EPA disinfection criteria.
- If transport vehicles (e.g., buses) are used by the school, drivers should practice all safety actions and protocols as indicated for other staff (e.g., hand hygiene, cloth face coverings).
- To clean and disinfect school buses or other transport vehicles, see CDC guidance for [bus transit operators](#).
- Cleaning products should not be used near children, and staff should ensure that there is adequate ventilation when using these products to prevent children or themselves from inhaling toxic fumes.



PLAYGROUND CONSIDERATIONS

- Routine cleaning of playground equipment
- High touch surfaces made of plastic or metal, such as grab bars and railings should be cleaned routinely
- Cleaning and disinfection of wooden surfaces (play structures, benches, tables) or groundcovers (mulch, sand) is not necessary.
- Handwashing should be done after each recess

Shared Objects

- Discourage sharing of items that are difficult to clean or disinfect.
- Keep each child's belongings separated from others' and in individually labeled containers, cubbies, or areas.
- Ensure adequate supplies to minimize sharing of high touch materials to the extent possible (e.g., assigning each student their own art supplies, equipment) or limit use of supplies and equipment by one group of children at a time and clean and disinfect between use.
- Avoid sharing electronic devices, toys, books, and other games or learning aids.

Choosing the Right Products

- **Use products that meet [EPA disinfection criteria](#).** These products can kill the virus that causes COVID-19 and include ready-to-use sprays, concentrates, and wipes.
- If an EPA-approved disinfectant is not available you can use 1/3 cup of bleach added to 1 gallon of water, or 70% alcohol solutions to disinfect.
- Do not mix bleach or other cleaning and disinfection products together
- **Ensure adequate supplies are available to support more frequent cleaning and disinfection.**
 - Consider whether teachers and staff will need additional cleaning and disinfection supplies (e.g., cleaning and disinfection products, paper towels, gloves) beyond those normally stocked in classrooms.
 - Consider providing EPA-registered disposable wipes to teachers and staff so that commonly used surfaces (e.g., desks/tables and chairs, keyboards, doorknobs, classroom sink handles, countertops) can be wiped down before use.

You can find additional information at the CDC's website on cleaning and disinfection of your facility.

Ventilation

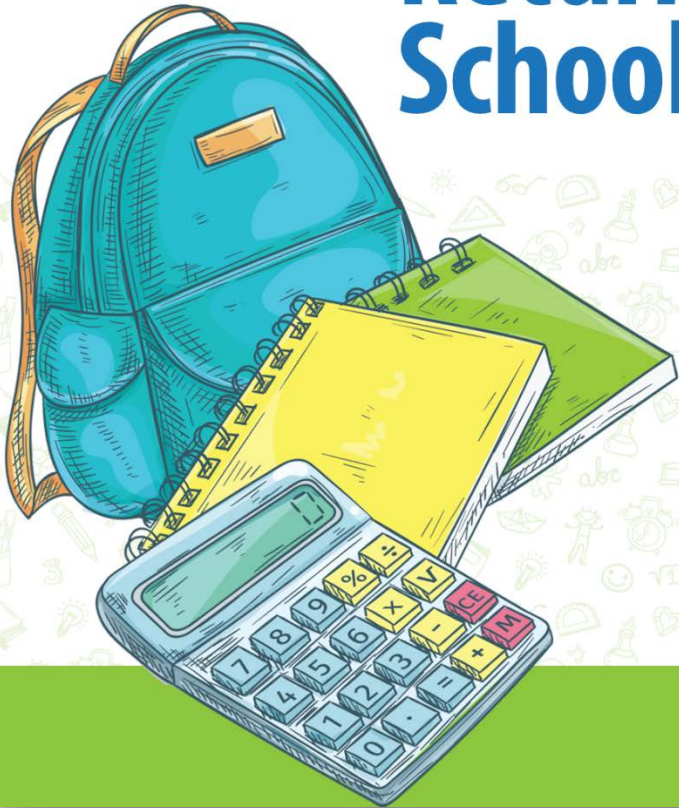
- Ensure ventilation systems operate properly and increase circulation of outdoor air as much as possible, for example by opening windows and doors.
- Opening doors and windows should never be done without considering important local factors such as security, air pollution, pollen and other allergen counts, outdoor temperature, and outdoor humidity.
- Opening doors and windows can significantly improve ventilation rates.
 - It is recommended that windows be opened two hours before occupancy.
- To increase air circulation, use of a portable fan or window air condition unit is acceptable to draw outdoor air into the classroom.
- Operating an HVAC system within classrooms is acceptable.

Water Systems

- To minimize the risk of diseases associated with water, take steps to ensure that all water systems and features (e.g., sink faucets, drinking fountains, decorative fountains) are safe to use after a prolonged facility shutdown.
- Recommending traditional drinking fountains be turned off.
- For more information on water systems you can contact our Environmental Health Division at eh@saginawcounty.com

COVID-19 Return to School Toolkit

(Part A)




- Part A – Narrative description of SCHD guidance for schools
 - Screening for Students and Staff
 - Face Coverings
 - Minimizing Risk
 - Contact Tracing
 - Cleaning and Disinfection

Will be available early NEXT WEEK

Screening

- All staff need to be screened upon building entry
- Recommended family pre-screen prior to school
- Have a plan to screen students if necessary
- Use existing outreach systems to provide REMINDERS for staff and students on pre-screening

 **Saginaw County HEALTH DEPARTMENT**

COVID-19 Workplace Health Screening

Company Name: _____ Time In: _____
Employee: _____ Date: _____

1. In the last 24 hours, have you experienced:

Subjective fever (felt feverish):	<input type="checkbox"/> Yes	<input type="checkbox"/> No
New or worsening cough:	<input type="checkbox"/> Yes	<input type="checkbox"/> No
Shortness of breath or difficulty breathing:	<input type="checkbox"/> Yes	<input type="checkbox"/> No

2. In the last 24 hours, have you experienced:

Chills:	<input type="checkbox"/> Yes	<input type="checkbox"/> No
Headache*:	<input type="checkbox"/> Yes	<input type="checkbox"/> No
Sore throat:	<input type="checkbox"/> Yes	<input type="checkbox"/> No
Loss of smell or taste:	<input type="checkbox"/> Yes	<input type="checkbox"/> No
Runny nose or congestion*:	<input type="checkbox"/> Yes	<input type="checkbox"/> No
Muscle aches:	<input type="checkbox"/> Yes	<input type="checkbox"/> No
Abdominal pain:	<input type="checkbox"/> Yes	<input type="checkbox"/> No
Fatigue:	<input type="checkbox"/> Yes	<input type="checkbox"/> No
Nausea:	<input type="checkbox"/> Yes	<input type="checkbox"/> No
Vomiting:	<input type="checkbox"/> Yes	<input type="checkbox"/> No
Diarrhea*:	<input type="checkbox"/> Yes	<input type="checkbox"/> No
Current Temperature:		

*New or worsening symptoms outside of what individual defines as normal.

If you answer "yes" to any of the symptoms listed above in section 1, at least two of the symptoms listed in section 2, OR your temperature is 100.4° F or higher, **please do not go into work. Self-isolate at home and contact your primary care physician's office for direction.**

- You should isolate at home for minimum of 10 days since symptoms first appear or per guidance of your local health department.
 - If diagnosed as a probable COVID-19 or test positive, call your local health department and make them aware of your diagnosis or testing status.
- You must also have 3 days without fevers (without use of fever reducing medications) and improvement in respiratory symptoms.

In the past 14 days, have you:

Had close contact with an individual diagnosed with COVID-19?	<input type="checkbox"/> Yes	<input type="checkbox"/> No
Traveled via airplane internationally or domestically?	<input type="checkbox"/> Yes	<input type="checkbox"/> No

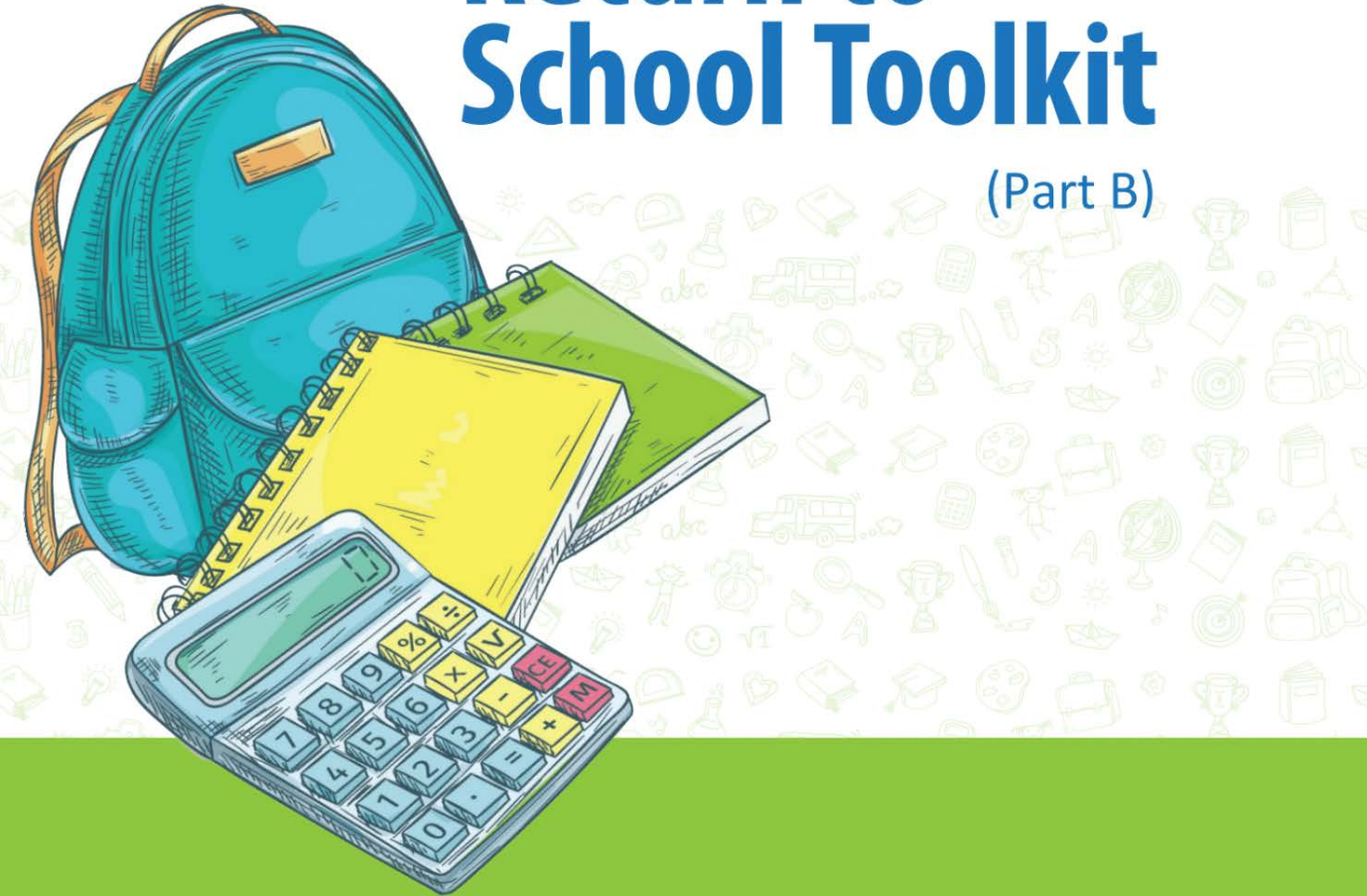
If you answer "yes" to either of these questions, **please do not go into work. Self-quarantine at home for 14 days. Contact your primary care physician's office** if you have symptoms or have had close contact with an individual for evaluation. If you are given a probable diagnosis or test positive call your local health department to ensure they are aware.

COVID-19 Return to School Toolkit

(Part B)

Part B is designed to provide documents and resources for schools.

- Fact Sheets
- Waivers
- Flow Charts



Saginaw County



HEALTH DEPARTMENT

Medical Exemption

COVID-19 SCHOOL GUIDANCE

PLEASE COMPLETE TOP SECTION BEFORE GIVING IT TO YOUR HEALTHCARE PROVIDER

Student/School Staff Name: _____

Date of Birth: _____

School Name: _____

The above-named individual requires documentation that they are unable to wear a facial covering due to a medical condition. Schools are required to obtain this documentation as they are with any other accommodation*. We appreciate your time and assistance in this matter.

The above-named individual **cannot** medically tolerate a face covering due to the following medical condition:

____ Medical condition that causes trouble breathing

____ Medical condition makes them unable to remove the cloth face covering without assistance

____ Other reason (please list) _____

____ This child should complete virtual/remote learning due to this medical condition

If unable to medically tolerate a face covering, this person **is able** to use a face shield

____ Yes

____ No

Healthcare provider name: _____

Signature: _____

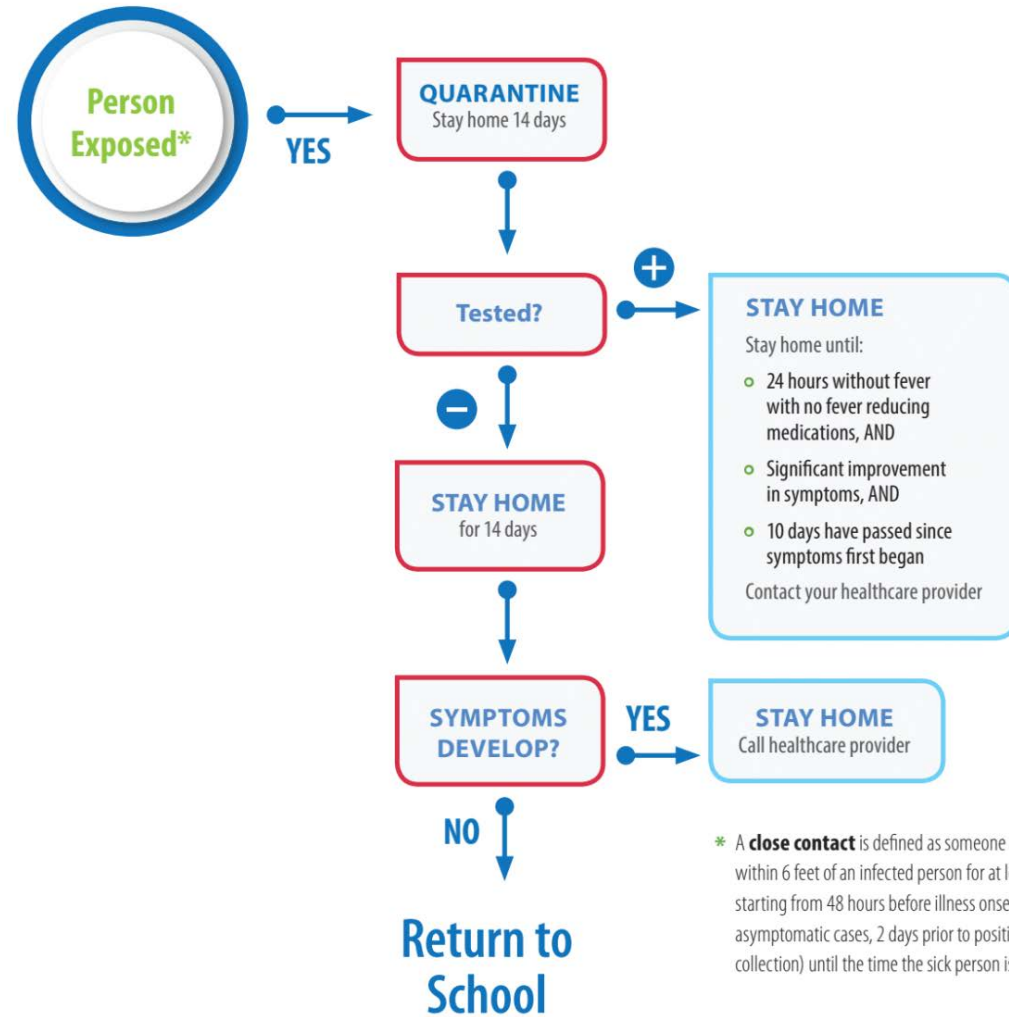
Date: _____

Phone Number: _____

*This list of acceptable conditions along with the guidance for schools to require this documentation from a medical professional has been provided by the state of Michigan and can be found at https://www.michigan.gov/coronavirus/0,9753,7-406-98178_98455-535121--,00.html.

Contacts Flow Chart

Evaluation for Close Contact

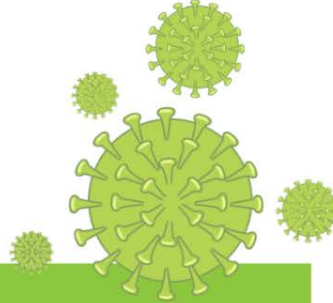




* A **close contact** is defined as someone who was within 6 feet of an infected person for at least 15 minutes starting from 48 hours before illness onset (or, for asymptomatic cases, 2 days prior to positive specimen collection) until the time the sick person is isolated.

When to Stay Home Infographic – Parent Education

COVID-19 SCHOOL GUIDANCE

When Should A Student Stay Home From School (or be sent home)



Any time they have these symptoms

- Fever, chills/sweating
- Sore throat
- Cough
- Runny nose
- Diarrhea, vomiting, abdominal pain
- Severe headache

Any time they are sick, regardless of symptoms

STOP! STAY HOME!

Don't assume "it's nothing." Talk to your healthcare provider to be sure.

- 24 hours without fever with no fever reducing medications, AND
- Significant improvement in symptoms, AND
- 10 days have passed since symptoms first began

Any time they are (or you suspect they are) exposed to COVID-19

Within six feet, for 15 minutes or more, with a confirmed COVID-19 person

STOP! STAY HOME!

Contact your healthcare provider about exposure and testing. If test comes back positive, stay home until:

- 24 hours without fever with no fever reducing medications, AND
- Significant improvement in symptoms, AND
- 10 days have passed since symptoms first began

If test comes back negative, stay home for a full 14 days as the incubation period for COVID-19 is 2-14 days and the disease may not be fully detected by testing if done early in the incubation cycle

3 W's Campaign – Parent Education

COVID-19 SCHOOL GUIDANCE

The 3 Ws: How to Best Protect Your Child When Returning to School



Wash your hands



Wear a mask (or face shield)



Watch your distance

These three tried-and-true public health measures are you and your child's best protection against COVID-19 and all communicable diseases. Remember to keep your children home whenever they are sick or potentially exposed to someone confirmed to have COVID-19. **This will help protect you and those you care about.**

Saginaw County  HEALTH DEPARTMENT

School Data Collection Form

COVID-19

SCHOOL
GUIDANCE

What to Do if Someone Tests Positive for COVID-19

☐ **Gather the following:**

Name of positive case: _____

Address: _____

Phone: _____

Grade: _____ **Building:** _____

Teacher (if student): _____

County of Residence: _____

Date of birth: ____ / ____ / ____

Positive test date: ____ / ____ / ____

Dates of attendance: _____
(dating back 2 days, or 48 hours, from the date of diagnosis)

Is the case symptomatic? ☐ yes ☐ no

☐ **Determine who the positive case has had close contact with in the last 2 days at school:**
(less than 6 feet apart, for at least 15 minutes)

☐ **Notify them immediately with directions that local health department will follow up:**

- Instruct close contacts to self quarantine for 14 days and monitor for symptoms. (See **Contact Tracing** fact sheet)

☐ **Submit this report to the local health department in the county where the positive case lives.** (not where the school is located)

- If Saginaw, please call the Saginaw County Health Department at (989) 758-3887.

☐ **Initiate school community communications to families.**

☐ **Clean and disinfect according to protocol.**

Scenarios for Closure

Closure is a local decision that should be made by school administrators in consultation with local public health. While it is not possible to account for every scenario that schools may encounter over the course of the school year, the following scenarios may help inform the decision for when schools should temporarily close.

SCENARIO	CLOSURE
1 confirmed case in the school	School remains open*; students and staff in close contact with positive case are excluded from school for 14 days.
2 or more cases in the same classroom (outbreak limited to one cohort)	School remains open*; students and staff in close contact with positive case are excluded from school for 14 days. Recommendations for whether the entire classroom would be considered exposed will be based on public health investigation.
2 or more cases within 14 days, but are linked to a clear alternative exposure that is unrelated to the school setting and unlikely to be a source of exposure for the larger school community (e.g. in same household, exposed at the same event outside of school)	School remains open*; students and staff in close contact with positive cases are excluded from school for 14 days.
2 or more cases within 14 days, linked together by some activity in school, but who are in different classrooms (outbreak involving multiple cohorts)	Recommendations for whether school closure is indicated will be based on investigation by local health department.
A significant community outbreak is occurring or has recently occurred (e.g., large event or large local employer) and is impacting multiple staff, students, and families served by the school community	Consider closing school for 14 days, based on investigation by local health department.
2 or more cases are identified within 14 days that occur across multiple classrooms and a clear connection between cases or to a suspected or confirmed case of COVID-19 cannot be easily identified (outbreak involving multiple cohorts)	Close school for 14 days.
Very high risk of community transmission (refer	Close school until COVID-19 transmission decreases.

More to Come

- Fact sheet for parent screening
- Updated scenarios
- Other needs you have?